

THANK YOU FOR CHOOSING A MORLEY® PEDAL.

YOU NOW OWN THE BEST PEDAL MADE!

Please take a few minutes to familiarize yourself with the features of your new pedal. We hope you enjoy using it as much as we enjoyed building it.

ABOUT OUR ELECTRO-OPTICAL CIRCUITRY:

An LED (Light Emitting Diode) shines on an LDR (Light Dependent Resistor). A shutter alters light between the two components controlling functions like Wah, volume and switching. Our Electro-Optical design ensures smooth pedal control without unwanted noise from typical potentiometer (pot) controlled pedals.

ABOUT THE CONNECTIONS:

9V: To ensure noise free operation, ONLY Morley's 9VDC 300 mA regulated adapter should be used (center polarity is negative)

IN: Input jack. Plug instrument into this jack using 1/4" guitar cable.

OUT: Connect amplifier to this jack using a 1/4" guitar cable.

USING AN AC ADAPTER:

All Morley® pedals use Morley's 9VDC 300 milliamp regulated adapter. Center pin polarity is negative. **Using a non-regulated adapter could cause a low frequency hum in your amplifier.** Using an adapter with the wrong polarity may damage the pedal.

USING A BATTERY:

All Morley® pedals are designed to use one 9V battery when not using an adapter. We suggest you use a good quality alkaline battery. To prolong battery life, unplug your cord completely from the input jack when not using the pedal. When the pedal is not used for extended periods, remove the battery from the pedal. Our "Quick Clip" battery door allows easy access to battery compartment.

ONE YEAR WARRANTY

All Morley® pedals are warranted for one year from date of purchase with a copy of your dated purchase receipt. For warranty service, contact dealer where pedal was purchased or email contact@morleyebtech.com.

KIKO LOUREIRO MINI SWITCHLESS WAH FEATURES (MODEL MTKIKO-EU):

- **Switchless Wah:** Step on to engage Wah, Step off and pedal goes to bypass automatically!
- **Electro-Optical:** No more pots to get scratchy and wear out
- **LED Indication:** Lights up when you're in Wah mode

MTKIKO-EU SPECIFICATIONS:

Power: 9V Battery or 9VDC 300mA regulated (center pin negative)

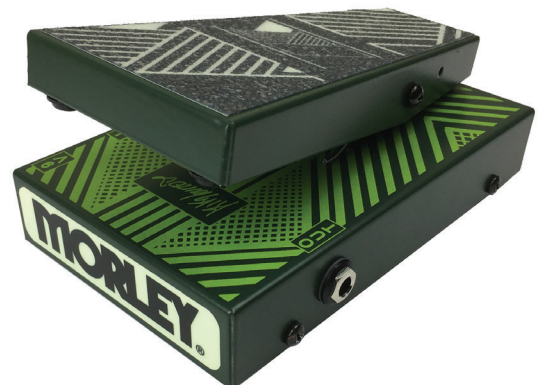
Indicator: Wah On, LED On

Dimensions: 6.75" L x 4.5" W x 2.75" H

Current Draw: 12 mA @ 9VDC

Weight: 2 lb./ 0.92 kg

www.morleyproducts.com



Limited Edition
Only 250 pcs Worldwide