

Installation Manual for RockBoard® QuickMount Pedal Riser L English



Thank you for choosing a **RockBoard®** QuickMount Pedal Riser L!

The **RockBoard®** QuickMount Pedal Riser L is a handy tool for raising effects pedals in the upper rows of the pedalboard. The Pedal Riser L compensates for the angle of the pedalboard and aligns the pedal parallel to the floor, so you can use the footswitches on those pedals without unintentionally stepping on the pedals in the front. The innovative QuickMount system can be easily mounted and removed from the slot grid of a **RockBoard®** pedalboard without additional tools.

Use of QuickMount Pedal Mounting Plates



The QuickMount Pedal Riser L offers the same slot grid as your **RockBoard®** pedalboard. If you have effects pedals with QuickMount Pedal Mounting Plates, you can now also mount these on the Pedal Riser L as described in the associated manual.

*NOTE: The **RockBoard®** QuickMount Pedal Riser L can be mounted on your **RockBoard®** pedalboard in two different ways: If the higher side of the Pedal Riser L points towards the flat, lower end of the pedalboard, the Pedal Riser L compensates for the angle of the pedalboard and aligns the pedal parallel to the floor. Alternatively, the Pedal Riser L can also be mounted with the flat side facing the lower end of the pedalboard. In this mounting orientation, the Pedal Riser L supports the angle of the pedalboard and enables easy, ergonomic access to the effects pedals in the upper row. Both variants are possible, so the respective orientation can be freely selected depending on requirements or application.*

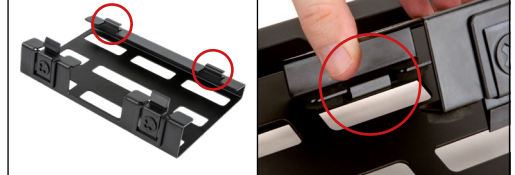
Mounting

Step 1



Push the included QuickMount lock into the intended opening on the higher side of the Pedal Riser L.

Step 2



Hook the intended nut on the flatter side of the Pedal Riser L into the slot grid of your **RockBoard®** pedalboard.

Step 3



Carefully push the Pedal Riser L down until the QuickMount lock latches into the slot grid of the pedalboard.

Step 4



Press the QuickMount lock lightly from the underside of the pedalboard to unlock and remove the Pedal Riser L.

Note: The manufacturer reserves the right to change these specifications without notice.