
ROCKTRON
TECHNOLOGY FOR GUITARISTS

HUSH[®] *Ultra*

Instruction Manual

HUSH[®] is a registered trademark of GHS Corporation



Your HUSH® Ultra noise reduction system has been tested and complies with the following Standards and Directives as set forth by the European Union:

Council Directive(s): 89/336/EEC Electromagnetic Compatibility

Standard(s): EN55013, EN50082-1

This means that this product has been designed to meet stringent guidelines on how much RF energy it can emit, and that it should be immune from other sources of interference when properly used. Improper use of this equipment could result in increased RF emissions, which may or may not interfere with other electronic products.

To insure against this possibility, always use good shielded cables for all audio input and output connections. Also, bundle audio cables separately from the AC power cables. These steps will help insure compliance with the Directive(s).

For more information about other Rocktron products, please see your local dealer or one of our importers closest to you (listed on the enclosed warranty sheet).

CONTENTS

1. Introduction	4
2. HUSH Ultra Front Panel	6
3. HUSH Ultra Back Panel	7
4. Quick Start	8
5. HUSH & GATE Threshold Controls	9
6. System Connections	10
7. HUSH Description	14
8. HUSH Ultra Edit Mode (Functions & Parameters)	16
□ TITLE EDIT Function	17
□ TRUE BYPASS IN/OUT Function	17
□ HUSH® Function	18
□ GLOBAL Function	19
□ MIDI CTRLINK Function	21
□ PRESET MAPPING Function	22
□ MIDI DUMP/LOAD Function	22
□ FUNCTION & PARAMETER, RANGE Listings	23
9. Operating the HUSH Ultra	24
□ Display Description	24
□ Selecting a preset	25
□ Changing preset parameters:	26
□ Storing changed preset parameters:	27
□ Title Edit	28
□ Preset Mapping	30
□ MIDI DUMP/LOAD	31
□ MIDI IN	33
□ MIDI THRU/OUT	33
□ Phantom Power	34
10. HUSH Ultra Specifications	35

1. Introduction

Congratulations on your purchase of the Rocktron HUSH® Ultra.

The HUSH Ultra is the ultimate noise reducing, eliminating and exterminating processor. The HUSH Ultra's innovative digital stereo noise exterminator provides two channels of the same world renowned professional noise reduction patented by Rocktron and used for years in thousands and thousands of guitar rigs and recording studios! The HUSH Ultra features True Bypass, an LCD display and programmable presets with MIDI control allowing you to tailor your HUSH settings on individual presets to suit your needs. The HUSH Ultra provides BOTH 1/4" and XLR inputs and outputs, and is easy to setup and easy to use.

Wipe out noise, eliminate hiss, crackle and other noise problems with the very best noise reduction circuitry available today!

OPERATING PRECAUTIONS

NOTE: IT IS VERY IMPORTANT THAT YOU READ THIS SECTION TO PROVIDE YEARS OF TROUBLE FREE USE. THIS UNIT REQUIRES CAREFUL HANDLING.

All warnings on this equipment and in the operating instructions should be adhered to and all operating instructions should be followed.

Do not use this equipment near water. Care should be taken so that objects do not fall and liquids are not spilled into the unit through any openings.

The power cord should be unplugged from the outlet when left unused for a long period of time.

DO NOT ATTEMPT TO SERVICE THIS EQUIPMENT. THIS EQUIPMENT SHOULD BE SERVICED BY QUALIFIED PERSONNEL ONLY. DO NOT MAKE ANY INTERNAL ADJUSTMENTS OR ADDITIONS TO THIS EQUIPMENT AT ANY TIME. DO NOT TAMPER WITH INTERNAL ELECTRONIC COMPONENTS AT ANY TIME. FAILURE TO FOLLOW THESE INSTRUCTIONS MAY VOID THE WARRANTY OF THIS EQUIPMENT, AS WELL AS CAUSING SHOCK HAZARD.

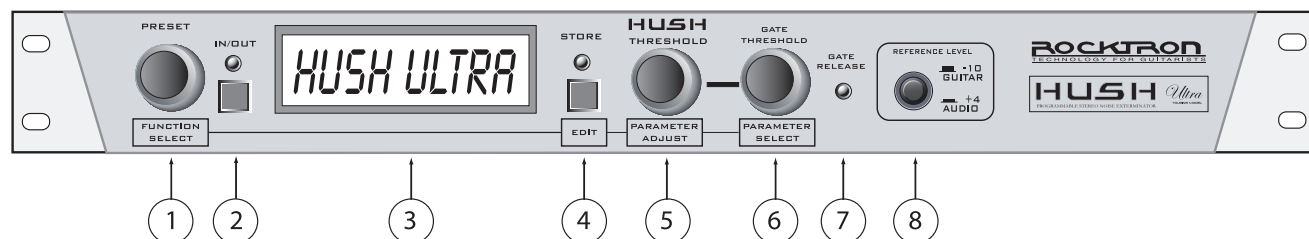
POWER REQUIREMENTS

This unit accepts power from the 9VAC/1.5A adaptor supplied with the unit. This 9 volt RMS AC voltage is internally processed by a voltage doubler which generates a bipolar ± 15 volts to maintain the headroom and sound quality of professional, studio quality equipment. Using an external power source such as this minimizes excessive noise and hum problems often associated with internal transformers, providing optimal performance for the user.

OPERATING TEMPERATURE

Do not expose this unit to excessive heat. This unit is designed to operate between 32° F and 104° F (0° C and 40° C). This unit may not function properly under extreme temperatures.

2. HUSH ULTRA Front Panel



1 **PRESET SELECT/FUNCTION SELECT**

Use this knob to select the different presets available within the HUSH Ultra. See section titled "SELECTING A PRESET" for more information on how to select a preset. When in "EDIT MODE" it is used to select the desired "FUNCTION" (Title Edit, True, Bypass, HUSH, Global, MIDI CTRLINK, Preset Mapping, MIDI Dump/Load, or Global Restore) to be altered. See section titled "CHANGING PRESET PARAMETERS" in this manual for more information on the FUNCTION SELECT control

2 **TRUE BYPASS IN/OUT button & LED**

This switch marked as "IN/OUT" allows for the HUSH Ultra to be bypassed when noise reduction is not required. When lit, the green LED indicates that the HUSH Ultra is in TRUE BYPASS mode. Thus the HUSH Ultra is not active and your signal is passing through the HUSH Ultra unaffected.

3 **DISPLAY window**

All of the HUSH Ultra's presets, functions and parameters, will be displayed in this window depending on what is being selected or adjusted.

4 **STORE/EDIT button**

This button is used to STORE any changes you make to presets. It is also used to put the HUSH Ultra into "PRESET EDIT" Mode. See PRESET EDIT mode later in this manual for more details on this function.

5 **HUSH THRESHOLD/PARAMETER ADJUST**

This control sets the point at which the downward expander and dynamic filter begin to operate. When in "EDIT MODE" this control is used to ADJUST the selected PARAMETER, within the selected FUNCTION. See section titled "CHANGING PRESET PARAMETERS" in this manual for more information on the PARAMETER ADJUST control.

6 **GATE THRESHOLD/PARAMETER SELECT**

This control is used to determine the level at which the gate will begin to operate. As the input signal drops below this level, the gate will activate and downward expansion will begin. When in "EDIT MODE" this control is used to SELECT a parameter with the selected FUNCTION to be altered. See section titled "CHANGING PRESET PARAMETERS" in this manual for more information on the PARAMETER SELECT control.

7 **GATE RELEASE LED**

When lit, the Gate Release LED indicates that the input signal has dropped below the level set by the Gate Threshold control, thus activating the gate and providing additional downward expansion.

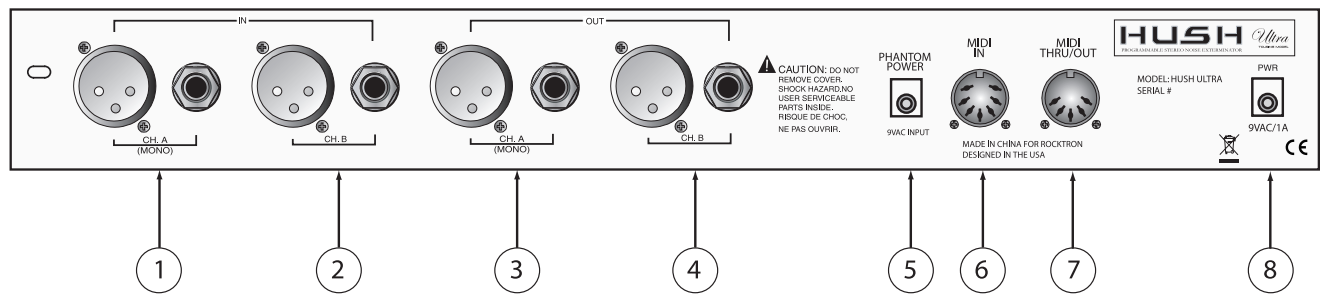
8 **REF switch**

This switch determines the sensitivity of the HUSH Ultra. When using the HUSH Ultra with professional audio equipment providing a nominal output level +4dB, it is recommended that the "+4dB" setting on the unit as the Threshold adjustment will allow you to optimize noise reduction for this reference level.

If the "-10" setting is used and the unit is overdriven, the "+4" setting should be used.

****The -10db setting is recommended for all instrument rigs.**

3. HUSH ULTRA Rear Panel



1 **CH. A (MONO) IN jacks**

This XLR and 1/4" mono jack provide inputs to the left channel of the HUSH Ultra. Use either the XLR jack or the 1/4" jack when connecting, but not both together. When using only one input use the "CH. A (MONO)" XLR or 1/4" jack".

2 **CH. B IN jacks**

This XLR and 1/4" mono jack provide inputs to the right channel of the HUSH Ultra. Use either the XLR jack or the 1/4" jack when connecting, but not both together.

3 **CH. A jacks**

This XLR and 1/4" mono jack provide the output from the "CH. A (MONO)" channel of the HUSH Ultra.

4 **CH. B jacks**

This XLR and 1/4" mono jack provide the output from the "CH. B" channel of the HUSH Ultra.

Note: When "CH. A" is used as a single signal source, the signal will be present in both the "CH. A" and "CH. B" outputs.

5 **PHANTOM POWER jack**

This 2.5mm pin jack accepts power from the 9VAC adapter supplied with a Rocktron foot controller (sold separately). See section called "PHANTOM POWER" for more information.

6 **MIDI IN jack**

Use this jack to plug in your MIDI controller. This jack is a 7 Pin MIDI Jack, however a standard 5 Pin MIDI Cable can be used. If plugging into a Rocktron MIDI controller such as the All Access, MIDI Mate or MIDI Xchange, we recommend using the Rocktron RMM900 7-Pin MIDI Cable (sold separately). Pins 6 and 7 supply phantom power to the Rocktron MIDI controller when using the RMM900.

7 **MIDI THRU/OUT jack**

Use this jack to plug into the first MIDI controllable device in your signal chain.

8 **POWER jack**

Plug the included 9VAC adapter into this jack to provide power to the unit. Please follow all precautions as outlined in this manual and the manuals of the products that are being plugged into the HUSH Ultra. Failure to follow these precautions may void the warranty.

HUSH Ultra Quick Start

The HUSH ULTRA default operation settings are:

MIDI CHANNEL = OMNI

PROGRAM CHANGES = ON

PROGRAM MAPPING = OFF

HUSH ACTIVE = IN

PROGRAMMING PRESETS:

1. Choose preset number by turning the PRESET/FUNCTION SELECT Knob or use Midi Controller.
2. Adjust Hush threshold control to eliminate noise and hiss by turning the HUSH THRESHOLD/PARAMETER SELECT Knob
3. Adjust Gate Threshold by using the GATE THRESHOLD/PARAMETER SELECT knob

Note: If you want desired preset to be a True Bypass preset press the Bypass button now

4. Press and release the STORE/EDIT button to save your changes
5. The display will blink “ STORE AT PRESET “

Note: to cancel the store mode at anytime turn the PARAMETER ADJUST KNOB

6. Use the PRESET/FUNCTION SELECT knob and pick the destination preset where you would like to save your changes.
7. Press and release the STORE/EDIT button.

* You must adjust the Hush Threshold or Gate Threshold in order to use the store function. When not in the EDIT mode if you want to store the current changes to the preset the store button must be pressed within 5 seconds after the initial change. After 5 secs the HUSH ULTRA will return to the preset name standby mode. To store the changes simply re-adjust either the Hush Threshold or Gate Threshold and press store.

HUSH & GATE THRESHOLD

HUSH THRESHOLD CONTROL

The front panel *HUSH Threshold* control determines the minimum input level at which the HUSH filter and downward expander will begin to operate. Setting this control too high will result in a loss of sustain, as notes will tend to die out much faster than they should. Conversely, when set too low, the expander will close too late (if at all) and the noise floor will remain audible.

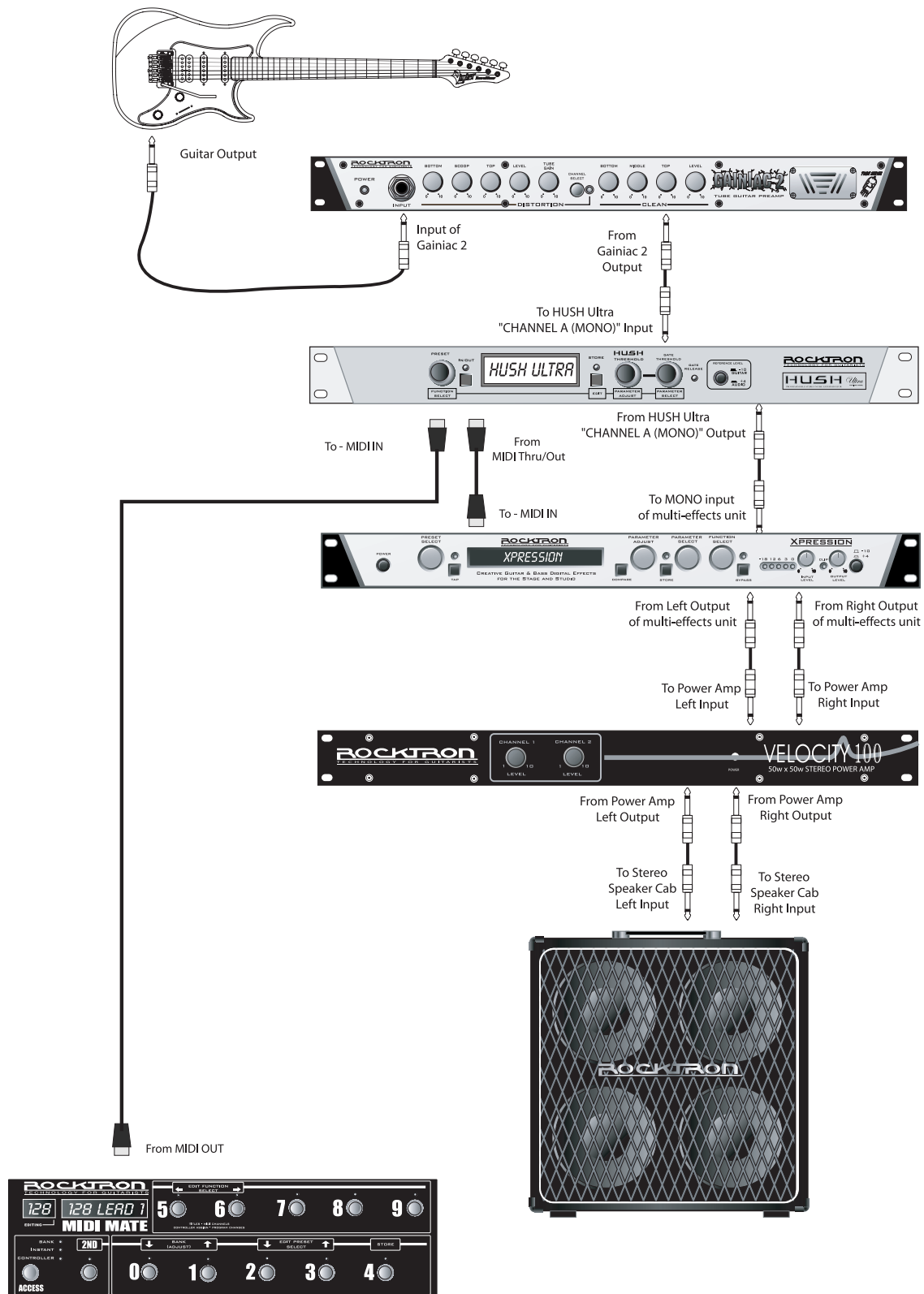
GATE THRESHOLD CONTROL

The other half of the HUSH Ultra consists of a noise gate. A noise gate completely shuts off the output signal when the input signal level drops below a prescribed threshold level (volume). On the HUSH Ultra, this threshold is determined by the Gate Threshold control on the front panel. This control should be set so that it doesn't cut notes off (i.e., set too high), yet doesn't activate long after a note ends (allowing the noise floor to remain audible).

This circuit is combined with the Variable Integrated Release (V.I.R.) circuit to provide an internal variable release to the downward expander. With the V.I.R. circuit, if the guitar signal decays slowly, the downward expander will engage slowly. If the guitar signal stops quickly, the downward expander will engage quickly. The LED indicates when downward expansion is active.

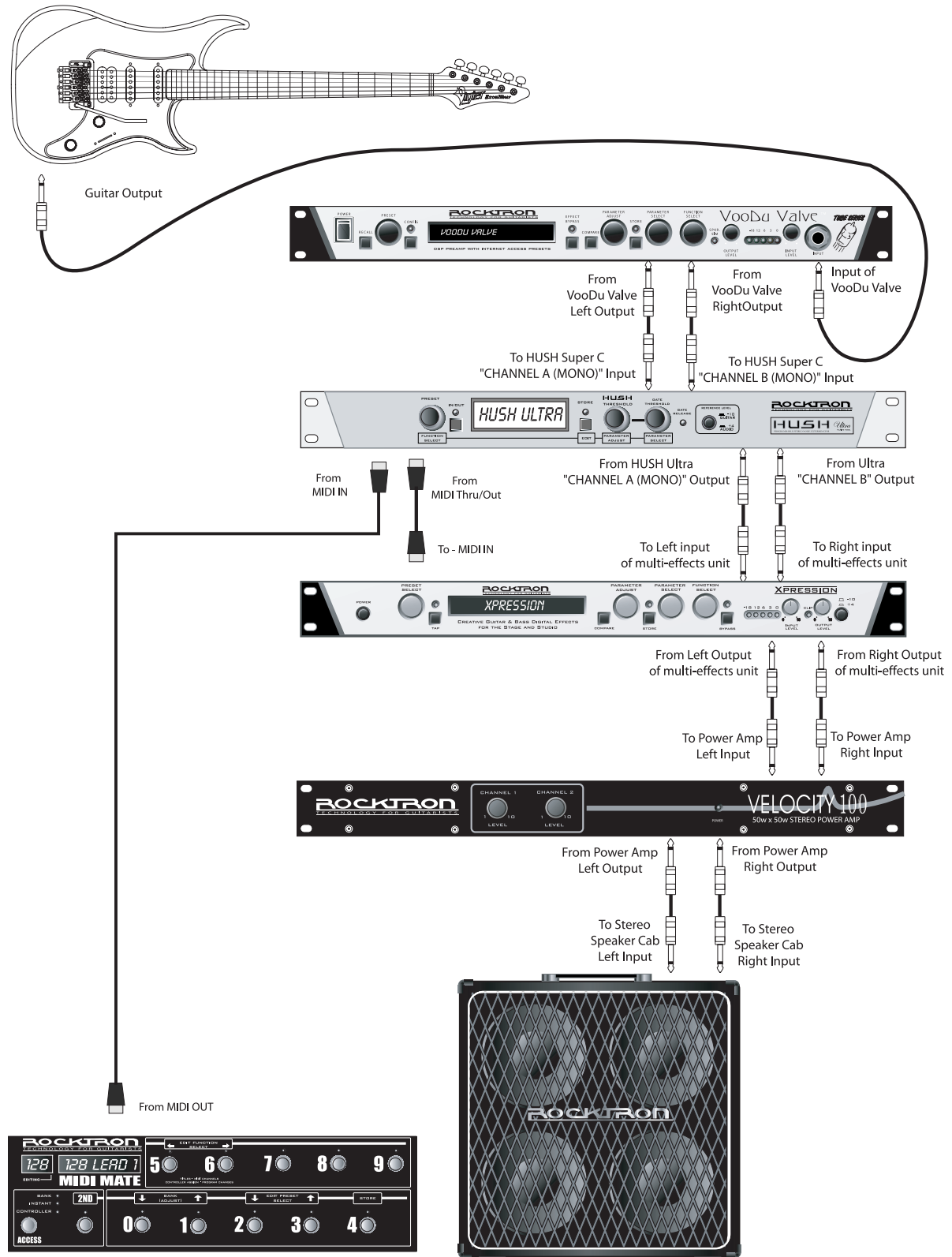
System Connections

This connection is an example of a mono connection from a preamp and a multi-effects processor



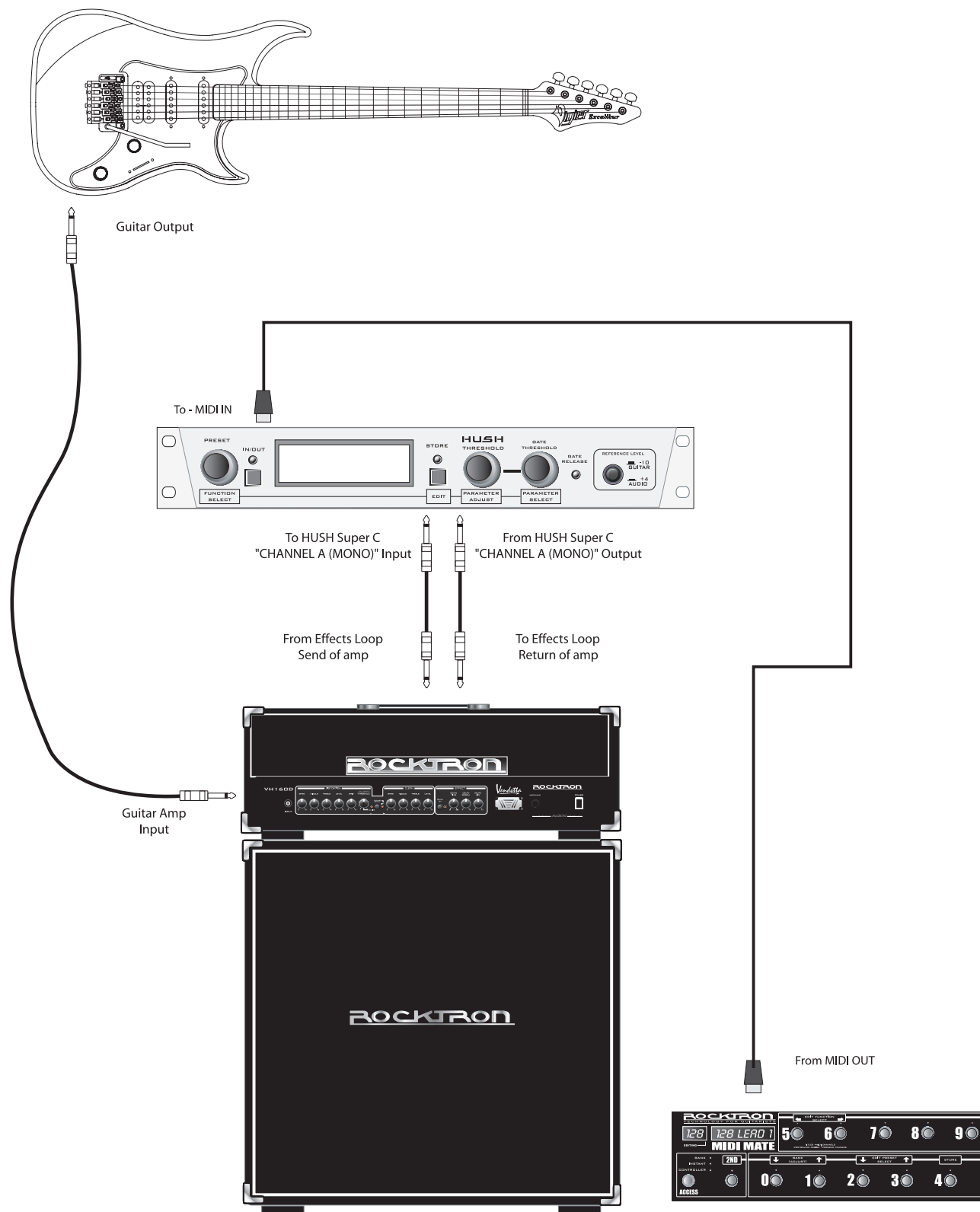
System Connections

This connection is an example of a stereo connection from a stereo preamp and multi-effects processor



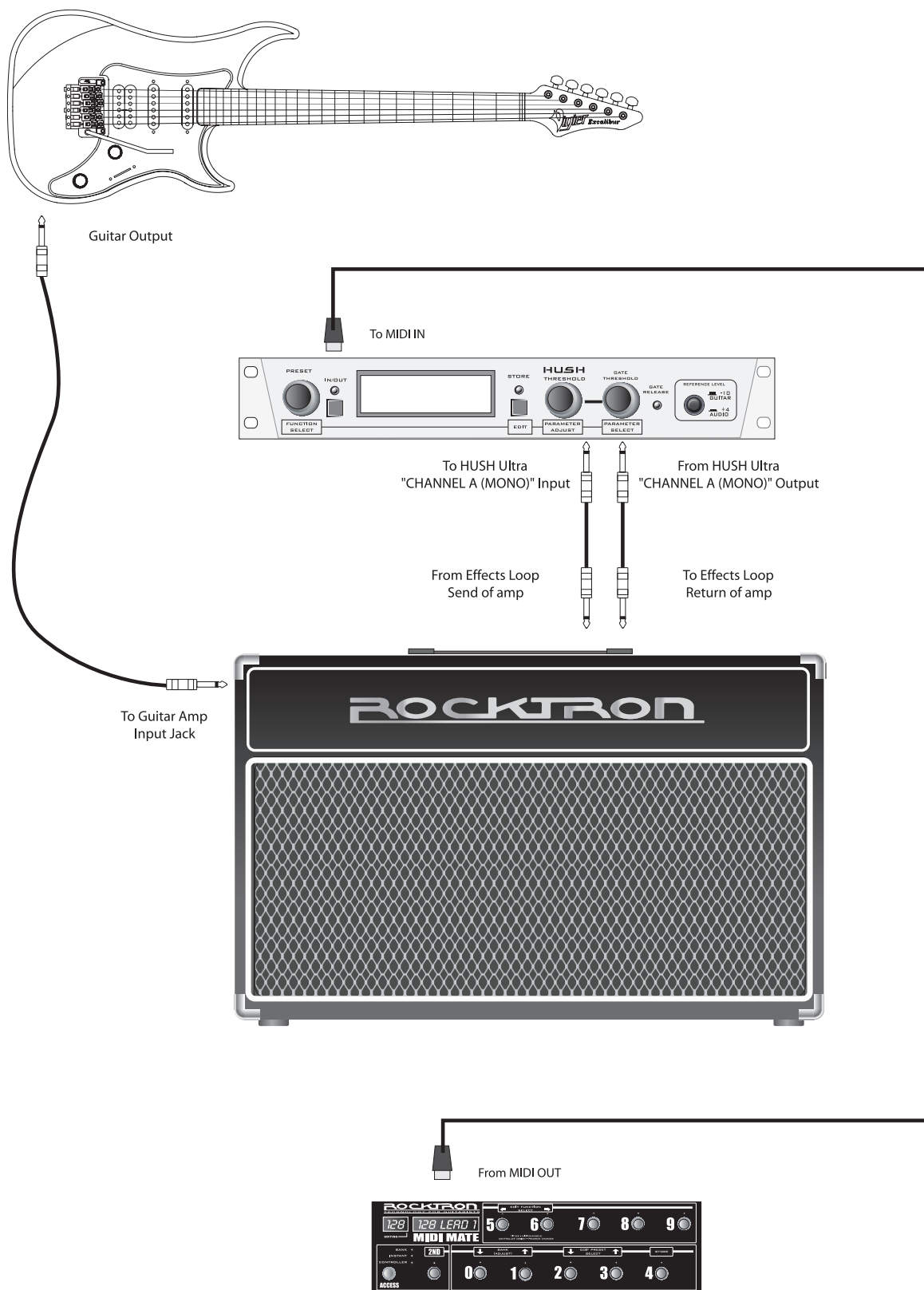
System Connections

This is a connection example of how you can connect the HUSH Ultra to use with a guitar amp head.



System Connections

This is a connection example of how you can connect the HUSH Ultra to use with a guitar amp combo.



HUSH Description

When used properly, the HUSH Ultra should be completely transparent (i.e., it should not effect the audio signal—only the noise). To maximize the performance of the HUSH Ultra, it is necessary to understand its front panel controls and how they work together. By understanding how these controls work, it will be easier to correctly set up the HUSH Ultra to suit any application.

The HUSH Ultra front panel provides two controls which each manipulate both channels simultaneously. The *HUSH Threshold* control sets the amount of noise reduction required for a given input signal, while the *Gate Threshold* control provides additional downward expansion when increased. (The *Gate Threshold* control may also be used by itself, allowing the unit to be used as strictly a downward expander.)

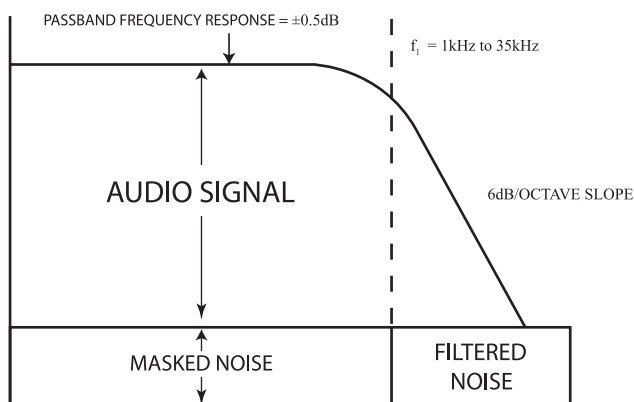
HUSH® Section

Rocktron's patented HUSH noise reduction is a single-ended system that combines the principles of *dynamic filtering* and low-level *downward expansion*.

Dynamic Filtering

Dynamic filtering is achieved by dynamically-controlling a low pass filter to open and close the bandwidth of the output signal depending upon the amount of mid and high band information present in the input signal. The filter bandwidth will only open far enough to pass the highest frequency information in the input signal, thus reducing the noise above it.

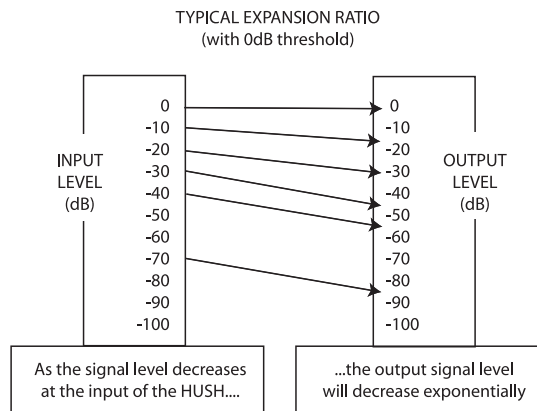
For example, if the highest frequency present in the input signal is 8kHz, the filter will open to pass up to 8kHz while the noise from 8kHz to 20kHz would be reduced. If a signal with frequency components up to 20kHz appears at the input, the dynamic filter will open to its full extreme (40kHz).



This means that if a signal is present at the input which consists of primarily bass components, the dynamic filter will reduce mid or high band noise. If no mid or high band information is present, the filter will close down to a pre-set cut-off point of 1kHz (allowing only frequencies of 1kHz and below to pass). However, if the input signal has high frequency components present, the dynamic filter will open fully to pass the signal and eliminate the possibility of a loss of high end frequency response.

Downward Expansion

The second half of the HUSH process incorporates downward expansion. The low level expander of the HUSH system operates like an electronic volume control. The HUSH system utilizes a voltage-controlled amplifier (VCA) circuit which can control the gain between the input and the output from unity to 30, 40 or even 50dB of gain reduction. When the input signal is above the user pre-set threshold point, the VCA circuit remains at unity gain. (This means that the output signal level is equal to the input signal level.) As the input signal level drops below the user preset threshold point, downward expansion begins. It is at this point that the expander acts like an electronic volume control and gradually begins to decrease the output signal level relative to the input signal level.



As the input signal drops further below the threshold point, downward expansion increases. A drop in the input level by 20dB would cause the output level to drop approximately 40dB (i.e., 20dB of gain reduction). In the absence of any input signal, the expander will reduce the gain so that the noise floor becomes inaudible.

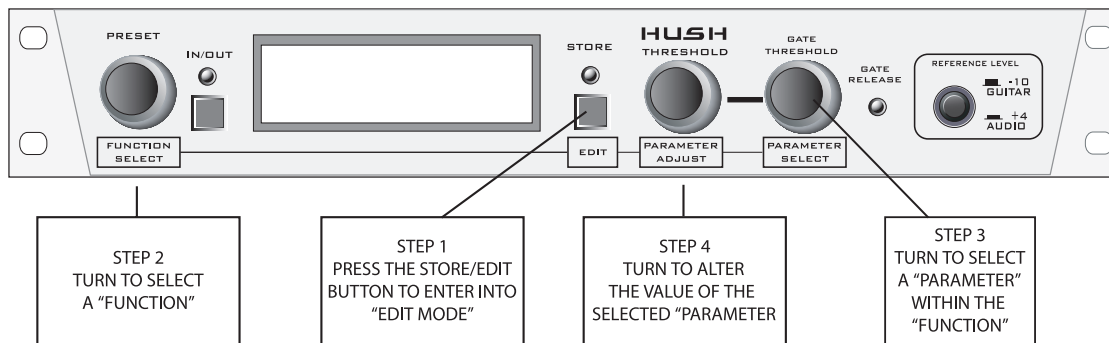
Edit Mode

Functions and Parameters Descriptions

Each HUSH Ultra preset is divided up into individual blocks called "FUNCTIONS" (such as Global, True Bypass, HUSH, Channel Link, Title Edit, MIDI Dump/Load, and Global Restore). Within each function of each configuration is a set of controls which allow you to manipulate various aspects of that function. These controls are called "PARAMETERS." It is the setting of each of the parameters which determines the overall sound/action of each preset.

To access these FUNCTIONS and PARAMETERS, you must first enter into the "EDIT MODE."

The HUSH Ultra is set up to allow you to first access each function (via the FUNCTION SELECT knob), then the parameter list for each function (via the PARAMETER SELECT knob) and finally the adjustable value for each parameter (via the PARAMETER ADJUST knob).



The functions available for each preset are dependent upon which effect is currently recalled. The remainder of this section will describe each of the effect-based functions and the associated adjustable parameters they provide.

The remaining functions are utility-based, and are described in the section titled **"Operating the HUSH Ultra"**.

TITLE EDIT Function

TITLE EDIT

The Title Edit function allows you to create a unique name for your preset. The Parameter select knob is used to move the cursor. The Parameter adjust knob is used to change the "character" in the title.

PARAMETER SELECT = CHARACTER POSITION

PARAMETER ADJUST = CHARACTER SELECT

IMPORTANT:

When you have completed editing the TITLE you must execute STORE before leaving the TITLE EDIT function.

TRUE BYPASS Function

The next function displayed after turning the FUNCTION SELECT knob is the "True-Bypass" function.

The PARAMETER SELECT knob will allow you to access these Global parameters:

TBYPASS

This TBYPASS parameter allows you to select either "ON" or "OFF". When "ON" the True Bypass is active and the signal passes directly through the HUSH Ultra unaffected. When "OFF" is selected the unit is active and True Bypass is off and HUSH is active.

TRUE BYPASS uses high quality relays to perform a total bypass of the HUSH ULTRA when using the ¼ jacks.

This may be activated in the EDIT MODE or via the TRUE BYPASS button on the front panel indicated as "IN/OUT" on the front of the HUSH Ultra. When TRUE BYPASS is on the Green LED will be lit.

True bypass state will be stored into the preset.

TRUE BYPASS:

TBYPASS	OFF/ ON	
TBYPASS MCC	OFF..120	MCC assigned to TBYPASS

Note: TBYPASS MCC is programmable per preset.

HUSH® Function

<i>HUSH I/O</i>	The HUSH I/O parameter simply determines whether the HUSH® circuit is active for the current preset. When "IN" is selected the HUSH is active. When "OUT" is selected the HUSH is "OFF".
<i>EXP THRESH1</i>	The EXP THRESHOLD (Expander Threshold) parameter determines the level at which downward expansion begins. For example, if the EXP THRESHOLD was set at -20(dB) and the input signal dropped below -20(dB), downward expansion would begin.
<i>GATE THRESH1</i>	The GATE THRESHOLD his control is used to determine the level at which the gate will begin to operate. As the input signal drops below this level, the gate will activate and downward expansion will begin.

HUSH	IN/OUT
HUSH_THRSH_A	1 .. 64
GATE_THRSH_A	1 .. 64
* HUSH_THRSH_B	1 .. 64
* GATE_THRSH_B	1 .. 64
* HUSH_THRSH_C	1 .. 64
* GATE_THRSH_C	1 .. 64
* HUSH_THRSH_D	1 .. 64
* GATE_THRSH_D	1 .. 64

* Only used when MIDI MCC LINK is active.

GLOBAL Function

The parameters provided in this function affect ALL presets (i.e. the settings stored for these parameters are the same for all presets).

The PARAMETER SELECT knob will allow you to access these Global parameters:

HUSH OFFSET	The HUSH OFFSET parameter allows you to globally (all presets) adjust the HUSH® Expander Threshold. This means that if this parameter is altered from 0(dB) to +3(dB), the Expander Threshold will be 3dB higher for all presets. This feature can be useful when switching from a quiet guitar with passive electronics to a noisy guitar with active electronics, as the active guitar would require a higher Threshold level in all presets.
MIDI RX	MIDI RECEIVE CHANNEL - 1.. 16 OMI The default setting is OMNI
PROGRAM CHANGES	The PROGRAM CHANGES function allows you to globally turn ON/OFF the HUSH Ultra to accept Program Changes from other devices. The default setting is ON.
PRESET MAP	The PRESET MAP function allows you to globally turn ON/OFF the PRESET MAPPING function. The preset mapping allows the HUSH Ultra to receive a Program Change from a MIDI Controller for one preset, but to actually recall a different preset. See PRESET MAPPING section later in this manual for more detailed information on PRESET MAPPING.
CHNLINK	The CHNLINK “ON/OFF” determines whether the CHNLINK Function is active or “ON” or not active or “OFF”
CC_NUM	CONTINUOUS CONTROLLER NUMBER
EXP THRESH1	EXPANDER THRESHOLD 1 parameter determines the level at which downward expansion begins. For example, if the EXP THRESHOLD was set at -20(dB) and the input signal dropped below -20(dB), downward expansion would begin.
GATE THRESH1	GATE THRESHOLD 1 control is used to determine the level at which the gate will begin to operate. As the input signal drops below this level, the gate will activate and downward expansion will begin.
EXP THRESH2	EXPANDER THRESHOLD 2 parameter determines the level at which downward expansion begins. For example, if the EXP THRESHOLD2 was set at -20(dB) and the input signal dropped below -20(dB), downward expansion would begin. Note that this is only used with the MIDI MCC Link is active.
GATE THRESH2	GATE THRESHOLD 2 control is used to determine the level at which the gate will begin to operate. As the input signal drops below this level, the gate will activate and downward expansion will begin. Note that this is only used with the MIDI MCC Link is active
EXP THRESH3	EXPANDER THRESHOLD 3 parameter determines the level at which downward expansion begins. For example, if the EXP THRESHOLD3 was set at -20(dB) and the input signal dropped below -20(dB), downward expansion would begin. Note that this is only used with the MIDI MCC Link is active.

GLOBAL Function continued....

<i>GATE THRESH3</i>	GATE THRESHOLD 3 control is used to determine the level at which the gate will begin to operate. As the input signal drops below this level, the gate will activate and downward expansion will begin. Note that this is only used with the MIDI MCC Link is active.
<i>EXP THRESH4</i>	EXPANDER THRESHOLD 4 parameter determines the level at which downward expansion begins. For example, if the EXP THRESHOLD4 was set at -20(dB) and the input signal dropped below -20(dB), downward expansion would begin. Note that this is only used with the MIDI MCC Link is active.
<i>GATE THRESH4</i>	GATE THRESHOLD 4 control is used to determine the level at which the gate will begin to operate. As the input signal drops below this level, the gate will activate and downward expansion will begin. Note that this is only used with the MIDI MCC Link is active.

MIDI CTRLINK:

For most users using individual presets will cover your needs however there are some power users that may desire to consider the following.

If you have a 4 channel amplifier that you can use 4 controllers to change channels you can program 1 preset using the MCC LINK.

CTRLINK OFF ; Determines whether function is active

CC_NUM_A OFF ..120 ;Assigns controller number

This correlates to recall HUSH_THRSH_A and HUSH_GATE_A when determined that the controller assigned matches and that a value greater than 63 has been detected as the channel select value. This will function with latching and momentary switching.

	DEFAULT MCC
CC_NUM_A will map to HUSH_THRSH_A and HUSH_GATE_A parameters.	85
CC_NUM_B will map to HUSH_THRSH_B and HUSH_GATE_B parameters.	86
CC_NUM_C will map to HUSH_THRSH_C and HUSH_GATE_C parameters.	87
CC_NUM_D will map to HUSH_THRSH_D and HUSH_GATE_D parameters.	88
TBYPASS MCC controller to be used for TRUE BYPASS	89

Note: It is recommended that PROGRAM CHANGES in the GLOBAL FUNCTION is set to off when using the MCC LINK mode. MCC LINK is programmable per preset if a combination of program changes and the MCC LINK is desired. When the CTRLINK is on and you are out of the EDIT MODE and you have sent any of the mapped controllers to the Hush Ultra the Hush Threshold and Gate Threshold controls will automatically map to the appropriate selection HUSH_THRSH_A , B, C or D. Example: A Midi controller sends MCC 87 with a value of 127 when you adjust the Hush Threshold you will see HUSH_THRSH_C on the display. Thus the HUSH ULTRA knows that set C is currently being used.

PRESET MAPPING Function

PRESET MAPPING

The Preset Mapping function allows you to use a MIDI Controller to recall different presets via program changes.

MIDI RECEIVED PROGRAM CHANGE number is on the left side of the screen.

The PRESET that will be recalled is on the right side of the screen.

Note: PRESET MAP in the GLOBAL FUNCTION must be set to ON for mapping to be active.

MIDI DUMP/LOAD Function

1 PR DUMP/LOAD

This function allows you to dump 1 preset from one HUSH Ultra to a second HUSH Ultra or a MIDI sequencer device.

BULK DUMP/LOAD

This function allows you to dump "ALL" presets from one HUSH Ultra to a second HUSH Ultra or MIDI sequencer device

Function, Parameter, Range Listing

FUNCTION	PARAMETER LIST	RANGE
(via FUNCTION SELECT)	(via PARAMETER SELECT)	(via PARAMETER ADJUST)
TITLE EDIT	XXXXXXXXXX	
TRUE BYPASS	TBYPASS	OFF, ON
HUSH	HUSH (Hush In/Out)	Out, In
.....	EXP THRESH1 (Expander Threshold Level)	1 .. 64
.....	GATE THRS1 (Gate Threshold Level)	1 .. 64
GLOBAL	HUSH OFFSET	-10(dB) to +30(dB)
.....	MIDI RECV	1 .. 16, OMNI
.....	PROGRAM CHANGES	OFF/ON
.....	PRESET MAP	OFF/ON
.....	CTRLINK	OFF/ON
.....	CC_NUM_A	0 TO 120
.....	CC_NUM_B	0 TO 120
.....	CC_NUM_C	0 TO 120
.....	CC_NUM_D	0 TO 120
.....	TBYPASS MCC	0 TO 120
.....	EXP THRS1 (Expander Threshold Level)	1 .. 64
.....	GATE THRS1 (Gate Threshold Level)	1 .. 64
.....	EXP THRS2 (Expander Threshold Level)	1 .. 64
.....	GATE THRS2 (Gate Threshold Level)	1 .. 64
.....	EXP THRS3 (Expander Threshold Level)	1 .. 64
.....	GATE THRS3 (Gate Threshold Level)	1 .. 64
.....	EXP THRS4 (Expander Threshold Level)	1 .. 64
.....	GATE THRS4 (Gate Threshold Level)	1 .. 64
PRESET MAPPING	1 MAP TO 1, 2 MAP TO 2, etc.	
MIDI DUMP/LOAD	1PR DUMP/LOAD	
.....	BULK DUMP/LOAD	
VERSION NUMBER	XXXXXXXXXX	

Operating the HUSH Ultra

The HUSH Ultra provides 128 stored presets. Any of the 128 presets can be called up at any time via the PRESET knob or via a MIDI Controller.

Each preset has the following Functions available at all times:

TITLE EDIT
TRUE BYPASS
HUSH®
GLOBAL
MIDI CTRLINK
PRESET MAPPING
MIDI DUMP/LOAD
VERSION NUMBER

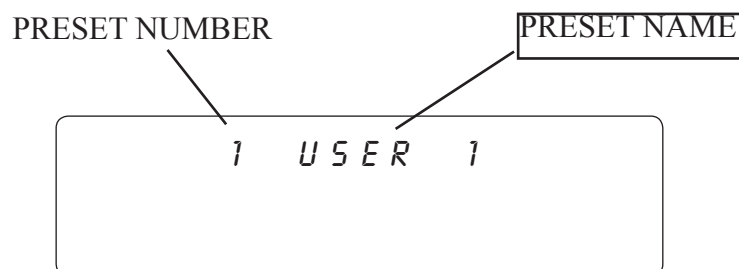
Display Description

The LCD display on the HUSH Ultra provides you with the information about the preset you are in:

Top line of display will show:

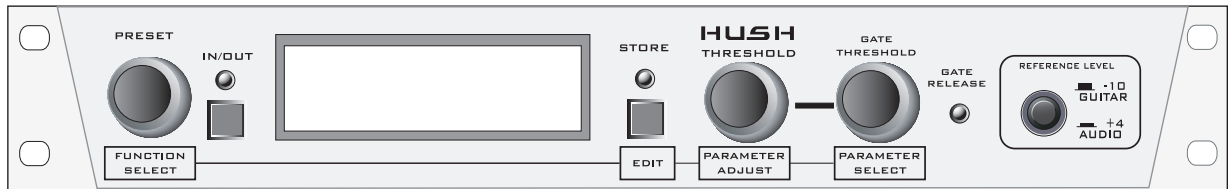
PRESET NUMBER - Displays the Preset Number you have selected.

PRESET TITLE - This is the "NAME" of the preset - in the example below - USER 1



SELECTING A PRESET:

There are two ways to select a preset on the HUSH Ultra. You can either turn the PRESET knob to the desired preset you wish to recall. The display will show the selected preset number.



1

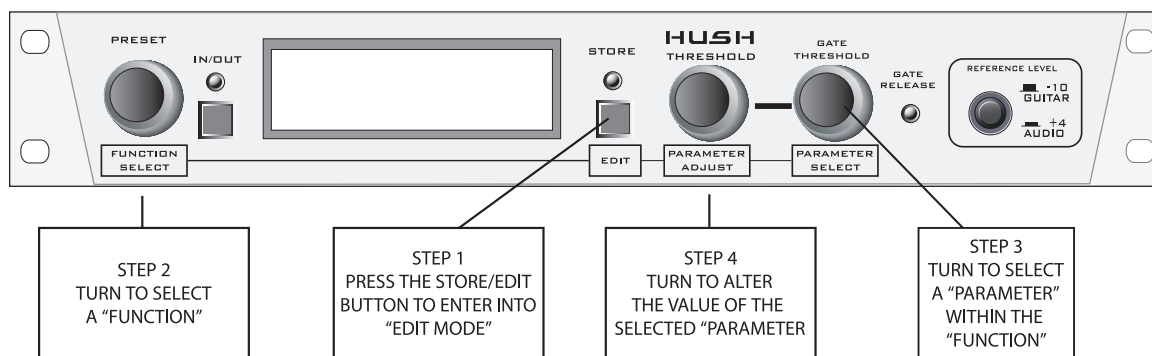


1. Turn the preset select knob to the desired preset

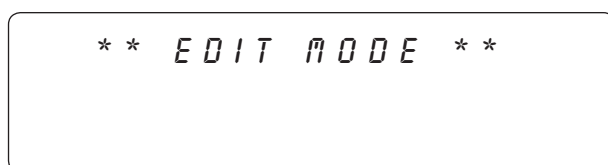


The second way to select a preset with a MIDI Controller such as the Rocktron MIDI Xchange, MIDI Mate, All Access or All Access LTD. See section on MIDI Connection on how to connect a MIDI Pedal to the HUSH Ultra and follow all instructions that come with your MIDI Pedal.

CHANGING PRESET PARAMETERS



STEP 1 - Enter EDIT MODE by pressing the STORE/EDIT button as shown above. When in EDIT MODE the display will show you are in "EDIT MODE" on the top line.



STEP 2 - To access the first "FUNCTION" to be adjusted, turn the PRESET/FUNCTION SELECT knob. The display will then show:



STEP 3 - To access the first "PARAMETER" to be adjusted, turn the GATE THRESHOLD/PARAMETER SELECT knob. The display will then show:



STEP 4 - To adjust the selected "PARAMETER", turn the HUSH THRESHOLD/PARAMETER ADJUST knob. The display will then show the adjusted parameter:

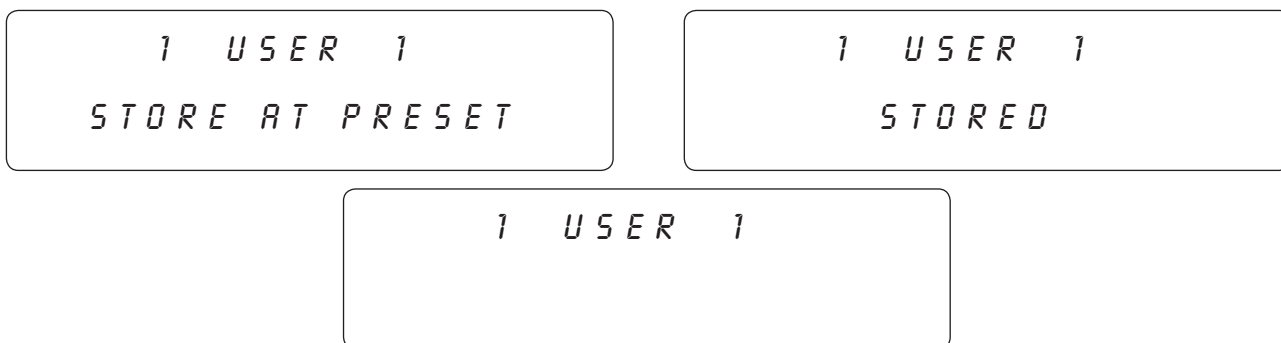


NOTE: If you have changed a parameter the "STORE" LED will light. The change(s) that you made will not be stored until you have pressed the "STORE" button. Please follow instructions on the next page for details on how to store changed parameters.

STORING CHANGED PRESET PARAMETERS

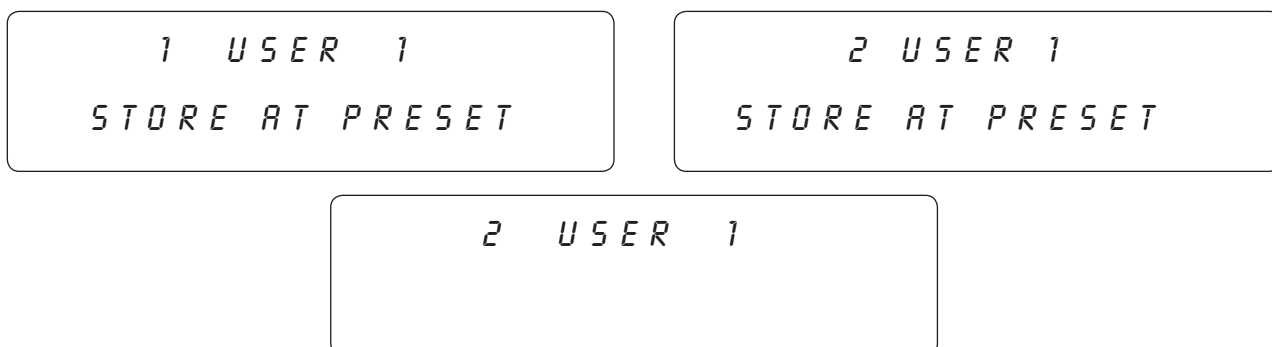
STORE CHANGES AT THE SAME PRESET

While viewing a function or parameter title, press the STORE button to start the store procedure. The words "STORE AT PRESET" will now be flashing under the changed preset name as shown below. If you would like to store the changes made at the current preset, simply press the STORE/EDIT button again and the changes will be stored. The word "STORED" will flash once and the preset will be stored.



STORE CHANGES AT A NEW PRESET

If you like to store the changes made at a different preset number, while viewing a function or parameter title, press the STORE button to start the store procedure. The words "STORE AT PRESET" will now be flashing under the changed preset name. Next turn the PRESET SELECT knob to the desired preset number and press the STORE/EDIT button. The word "STORED" will flash once and the preset will be stored at the selected preset

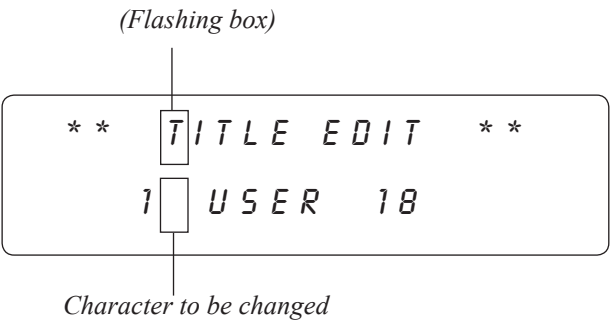


Title Edit

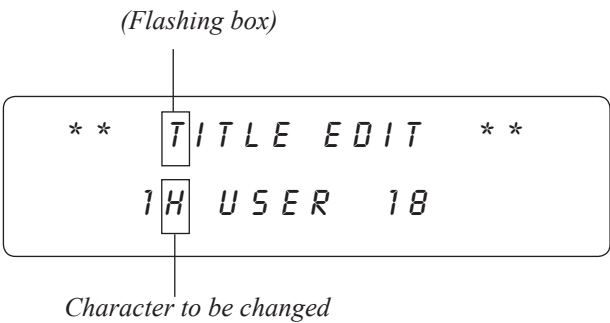
Step 1 To begin the Title Edit function, turn the FUNCTION SELECT knob clockwise until the HUSH Ultra displays "TITLE EDIT".



Step 2 Turn the PARAMETER SELECT knob clockwise to initiate the Title Edit mode. Turning this knob will also select the character above the part of the current title to be edited. The letter to be adjusted will have a flashing box over the character selected.

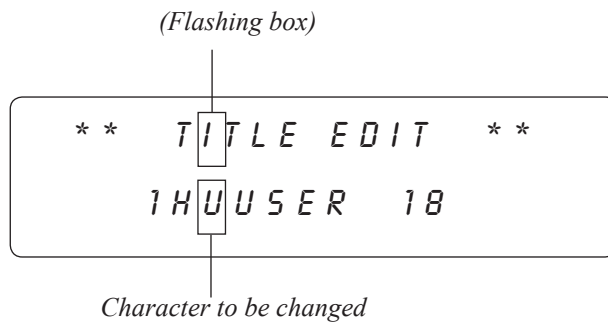


Step 3 Use the PARAMETER ADJUST knob to select the desired character for the current position (flashing box).



Title Edit continued.....:

- Step 4** To edit the next character in the next position, turn the PARAMETER SELECT knob one step clockwise. The flashing box will move to the next character to be adjusted.



- Step 5** After all the characters have been edited as needed, press the STORE button to save the new title to memory. The HUSH Ultra will flash "STORED" briefly.



NOTE: The STORE button must be pressed to save the new title. Exiting the Title Edit function before pressing the STORE button will erase any editing that was done in Title Edit. Also, after flashing "STORED", the HUSH Ultra will exit the title edit mode and return to the main preset number.

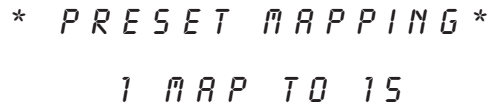
PRESET MAPPING Function

- Step 1** Use FUNCTION SELECT while in EDIT MODE to select the PRESET MAPPING function



* PRESET MAPPING *

- Step 2** Turn the PARAMETER SELECT to enter the MAPPING MODE.



* PRESET MAPPING *
1 MAP TO 15

- Step 3** Now the PARAMETER SELECT correlates to the MIDI RECEIVED PROGRAM CHANGE number (number on the left side of screen.)

The PARAMETER ADJUST selects the PRESET that will be recalled (Number on the right side of the screen) when the received program change is executed.

In above example the HUSH ULTRA received a PROGRAM CHANGE from a midi controller for preset 1. The actual preset recalled will be 15!

Note: PRESET MAP in the GLOBAL FUNCTION must be set to ON for mapping to be active.

IMPORTANT:

After you have completed all your preset mapping you must execute STORE before leaving the PRESET MAPPING function.

MIDI DUMP/LOAD

Any or all of the HUSH Ultra's presets may be dumped to another HUSH Ultra a sequencer or MIDI utility program using a PC midi interface to create a (.syx) file. All the information about the presets you have created will be dumped consisting of parameter values, title characters and controller assignments. When dumping a single preset into another HUSH Ultra, the dumped preset can be loaded into any preset location on the receiving unit.

Note: The HUSH Ultra midi data when sent by external means such as a PC MIDI utility program you will need to configure it as stated below.

Buffer size 264 bytes

No of buffers 16 both RX and TX

100ms between buffers be used initially as a starting point.

100ms after F7 [optional]

If a MIDI sequencer is used to store the data record the Sysex data in real-time or adhere to the parameters given above.

Step 1 Connect a standard MIDI cable from the MIDI OUT of the transmitting HUSH Ultra to the MIDI IN of the receiving HUSH Ultra. Consult MIDI Connection drawing for more information.

Step 2 If you are dumping a single preset to another HUSH Ultra, the transmitting HUSH Ultra must have that preset selected.

Step 3 Press the "STORE/EDIT" button to enter into the "EDIT MODE". Turn the FUNCTION SELECT knob to MIDI DUMP/LOAD.



MIDI DUMP/LOAD

Step 4 On the receiving HUSH Ultra use the PRESET Select control to select the preset location where the received preset will be stored. Note that the preset currently stored at the selected location will be lost when the new preset is received.

MIDI DUMP/LOAD continued.....:

- Step 5** On the transmitting HUSH Ultra, press the STORE button to dump the preset. The transmitting HUSH Ultra will display "DUMPED"



MIDI DUMP/LOAD
1 DUMPED

- Step 6** To BULK DUMP all presets to another HUSH Ultra or upload them to a Sequencer or Computer using a PC MIDI interface along with a MIDI Utility program, use the PARAMETER SELECT knob, select BULK DUMP/LOAD and follow Steps 4 and 5



MIDI DUMP/LOAD
BULK DUMP/LOAD

MIDI IN

The MIDI IN in the HUSH Ultra will allow you to select presets directly from a MIDI controller such as the Rocktron MIDI XChange, MIDI Mate, All Access or All Access LTD. Follow the connection steps in the CONNECTIONS section of this manual.

Please note that though the HUSH Ultra has a 7 Pin din connector any standard 5 pin MIDI cord may be used for device connections. This 7-pin DIN connector must be connected to the MIDI OUT jack of the transmitting MIDI device via a standard MIDI cable, or to the MIDI THRU jack of the preceding MIDI device (if the HUSH Ultra is within a chain of MIDI devices). Pins 6 and 7 of this connector carry phantom power to power a Rocktron MIDI foot controller (MIDI XChange, All Access and MIDI Mate) when a 7-pin MIDI cable is used.

MIDI OUT/THRU

The MIDI OUT/THRU in the HUSH Ultra will allow you to transmit and control other MIDI capable devices thru the HUSH Ultra. Follow the connection steps in the CONNECTIONS SECTION of this manual. Follow the connection steps in the CONNECTIONS section of this manual.

This standard 5-pin DIN connector can be connected to the MIDI IN jack of another device via a standard MIDI cable. There are limitations to the number of devices that can be chained (or series connected) in this fashion.

Note: Inherently in MIDI there is a limit to the number of devices which can be chained together (connected in series). With more than 3 devices, a slight distortion of the MIDI signal can occur (due to signal degradation) which can cause an error in MIDI signal transmission. Should this problem arise, a MIDI Thru box can be used which connects directly to the MIDI device which transmits MIDI information and has multiple connectors for the multiple devices receiving MIDI. MIDI cables should not exceed 50 feet (15 meters) in length.

PHANTOM POWER

This 2.5mm PIN jack offers the ability to power Rocktron MIDI foot controllers from a 7-pin MIDI cable which connects from the Rocktron MIDI foot controller to the MIDI IN jack on the rear panel of HUSH Ultra.

This eliminates the need to find an AC outlet near where the footpedal would be placed during a performance, or the need to run an extension cord out to the footswitch. Instead of inserting the AC adaptor into the “POWER” jack of the footswitch as you would normally, plug it into the “PHANTOM POWER” jack on the HUSH Ultra. This will power the Rocktron MIDI foot controller through pins 6 and 7 of the MIDI cable connecting the two units. The Rocktron RMM900 7-pin MIDI cable must be used in this operation and is available from your Rocktron dealer.

Specifications

Maximum Input Level	+15dB (+4 Ref.) +5dB (-10dB Ref.)
Input Impedance 1/4" Jacks	470K Ohms
Output Impedance 1/4 Jacks	100 Ohms
Input Impedance XLR Jacks	10k Ohms
Output Impedance XLR Jacks	2.2k Ohms
Effective Noise Reduction	up to 72dB
Frequency Response	±.5dB, 10Hz - 27kHz
Dynamic Range	105dB
Noise Floor	-100dBu
THD + Noise	.041% @ 0dBu, 1kHz (typ)
Current Consumption	405mA
Dimensions	19" x 4" x 1 ³ / ₄ "
Power	9vac 2000mA

Note: 0dBv = 0.775V RMS

CE Approved



HUSH *Ultra*

Rocktron -A Division of GHS Corporation

2813 Wilbur Avenue

Battle Creek MI 49037

USA

Rocktron Phone: 1-(269)-968-3351

Email: info@rocktron.com

www.rocktron.com