

Hub Manager and Firmware Update Instructions

Thank you for purchasing the Soundblox Hub. The following steps will guide you through the Soundblox Hub Manager Software for updating hardware, editing, and saving presets. Since the Hub adds a tremendous amount of new functionality to Soundblox 2 pedals, this guide will show you everything you need to get the most out of your setup, so that you will be ready to go. We will periodically offer firmware updates for our products. You can use the Hub to perform these updates, for the Hub itself and Soundblox 2 pedals. For current Soundblox 2 users, it is highly recommended that you update your pedals upon receiving the Hub. Without current Soundblox 2 firmware, you will not have access to all Hub features.

1. **Software:** Start by downloading the Soundblox Hub Manager Software and included Firmware Update files. This can be found on our website here:

http://www.sourceaudio.net/products/toolblox/soundblox_hub_v1.php

Once installed, open the Manager Software display window (fig. 1)...

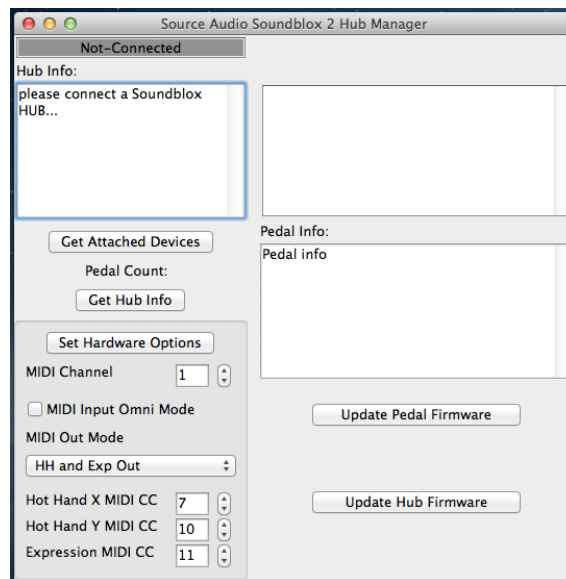


fig.1

2. **Connect With Your Hub:** Power up your Hub with the included Source Audio 9V DC power supply. Attach the included USB cable to the USB port on the hub, and the USB port on your computer. The status in the upper left corner of the Manager Software window will update automatically, and display the Hub's current information (fig.2).

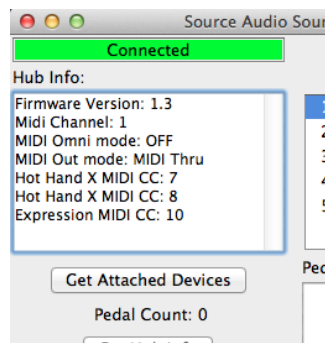


fig. 2

3. **Update Pedal Firmware:** Connect any of the Multi-Function Outputs of the Hub, to the Multi-Function Input of your Soundblox 2 pedal with a provided Daisy Chain Cable. **Although the Hub connects all your pedals during performance, it is important to have only one (1) pedal connected when updating firmware.** Power up your pedal with its Source Audio Power Adapter, and click the “Get Attached Devices” button (fig. 2) on the Manager Software window. You will see the name of the pedal appear in the window, in the upper right (fig. 3).

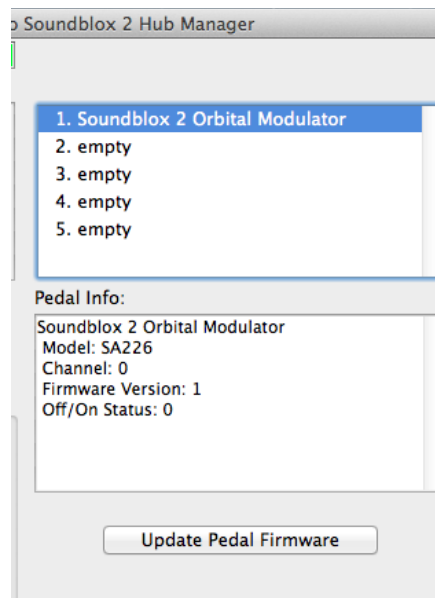


fig. 3

Click on the title of your pedal to show information in the *Pedal Info* panel listed below the devices attached. Update the firmware of the pedal, by clicking the “Update Pedal Firmware” button, and select the folder “Soundblox 2 Pedal Firmware” from the previously downloaded file. Select the correct file name, (ie: SA226 Orbital Modulator), to load the firmware update. The LED’s on your pedal will light up, and footswitch 1’s LED will blink rapidly. **Do not unplug any cables during this process. Doing so may cause programming errors.** The average update takes about 30 seconds, and your computer will notify you when complete. Click “OK” to continue, and to return to the Manager Software window (fig. 4). Repeat the process for all your pedals.

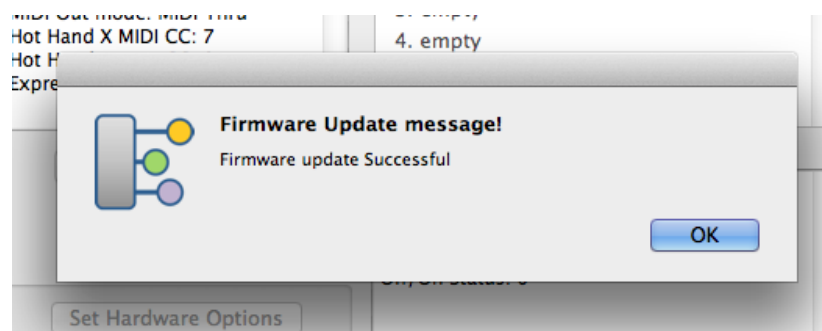


fig. 4

4. **Editing Controls:** With your pedals connected, and firmware updated, you can now custom design other aspects of the Hub for your usage. These controls can be found on the lower left corner of the Manager Software window (fig. 5). The *Hub Info* panel displays the current configuration and options for the Hub. Once you have changed an option, click the “Set Hardware Options” button to save the information. All saved changes will update in the *Hub Info* panel.

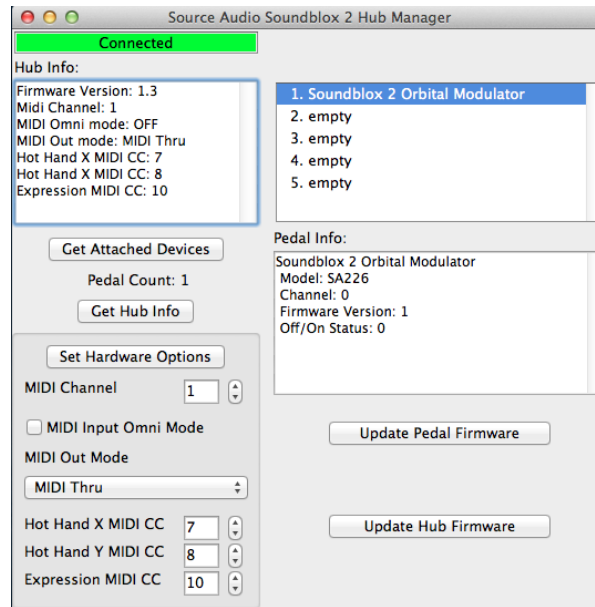


fig. 5

Options to edit include:

- **MIDI Channel:** Use the arrows to select the MIDI Channel of the Hub. This determines the MIDI channel the Hub will respond to, from a device connected to the MIDI IN, and what channel it will send information on to another device connected to the MIDI OUT.
- **MIDI Input Omni Mode:** By selecting this mode, the MIDI channel option is ignored, and the Hub will send and receive MIDI information on all MIDI channels via its MIDI IN and OUT ports.
- **Dropdown Menu:** Choose from “MIDI Thru”, or “HH and EXP Out”. By choosing “MIDI Thru”, the Hub will take MIDI signals from a device connected to the MIDI IN port, and pass it through to a device connected to its MIDI OUT port.

By choosing “HH and EXP Out”, the Hub will take control information from its SENSOR IN port and EXP IN port, and send MIDI Control Change Messages to a device connected to its MIDI OUT port. These MIDI Control Change, or CC Messages can be determined by the next 3 options.

- a. **Hot Hand X MIDI CC:** Use the arrows to determine the CC Message for the X-axis of the Hot Hand 3 controller connected to the SENSOR IN of the Hub.
 - b. **Hot Hand Y MIDI CC:** Use the arrows to determine to CC Message for the Y-axis of the Hot Hand 3 controller connected to the SENSOR IN of the Hub.
 - c. **Expression MIDI CC:** Use the arrows to determine the CC Message for the Expression pedal connected to the EXP IN of the Hub.
5. **Update Hub Firmware:** Click this button to update the Hub firmware for the latest edits, features, and controls available from Source Audio.