



MICROPHONE IN-LINE TUBE PREAMP

English Manual

www.xvive.com

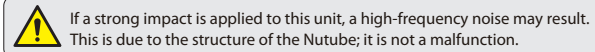
– 01 –

PRECAUTIONS

1. Always use high-quality XLR cables in good condition to avoid hum or shorts.
2. If you experience hum or interference, try a different cable or power source.
3. Do not disassemble the P2—there are no user-serviceable parts inside.
4. Keep the P2 in a dry, dust-free environment when not in use.
5. Charge the battery at least once a month to maintain battery health.
6. Avoid strong physical impact, as vibration may cause audible noise due to the internal tube structure (this is not a malfunction).

ABOUT Nutube

Nutube is a new type of vacuum tube that utilizes technology from vacuum fluorescent displays. As with conventional vacuum tubes, Nutube is constructed with an anode, grid, and filament, and operates as a complete triode tube. Although it is much smaller, more efficient and longer-lasting, Nutube generates the same response and rich harmonic characteristics of conventional vacuum tubes.



Nutube and the Nutube logo are either registered trademarks or trademarks of KORG INC. in Japan and/or other countries.

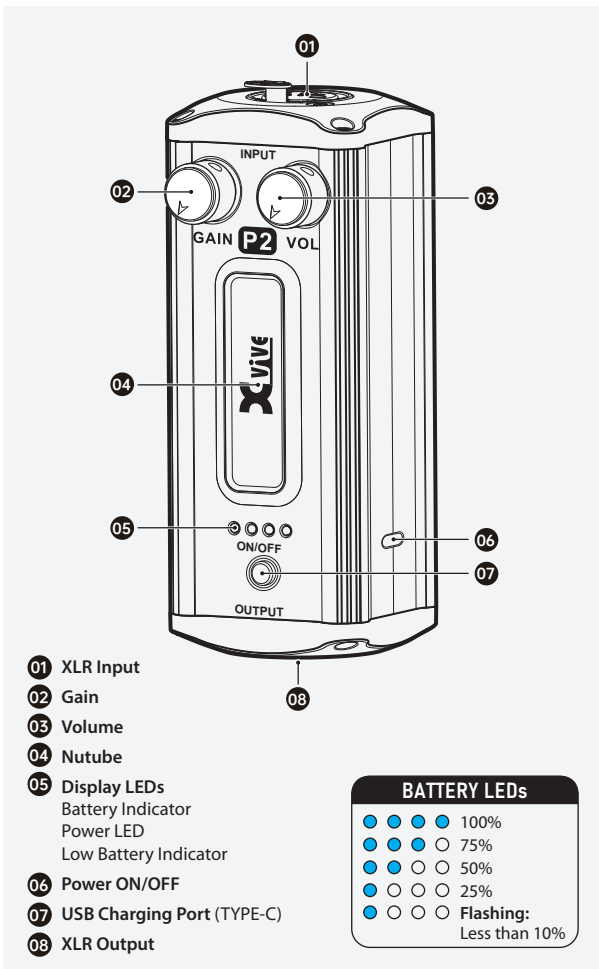
INTRODUCTION

Give your microphone signal an instant upgrade with this easy-to-use and budget-friendly in-line tube preamp/booster for any dynamic or ribbon microphone.

P2 uses innovative Nutube technology to bring the natural warmth and harmonics of a true vacuum tube into your signal chain—while providing up to +40 dB of clean, adjustable gain.

By shaping your sound with the Gain and Volume controls, you can easily dial in everything from warm, tube-infused tones to transparent clean boosts.

Whether you're working with a mixer, audio interface or external mic preamp, P2 delivers a louder, richer signal with improved clarity and presence.

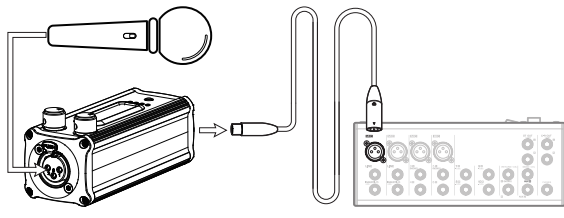


– 02 –

QUICK START

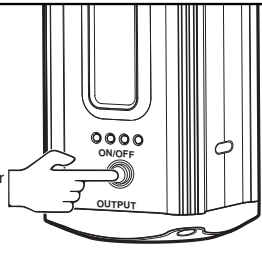
CONNECT YOUR MICROPHONE AND OUTPUT DEVICE

Connect your dynamic or ribbon microphone to P2's input, and connect P2's output to your mixer, audio interface, or other microphone input using standard XLR cables.



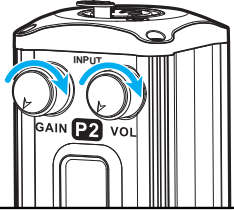
POWER ON THE P2

Long press for 3 seconds to turn on the power switch. The power LED will light up.



ADJUST YOUR SOUND

Use the Gain knob to control how much tube coloration and signal boost you want—from clean transparency to warm saturation. Then use the Volume knob to set your desired output level.



– 03 –

SPECIFICATIONS

Vacuum Device	Nutube 6P1
Input jack	Female XLR (balanced)
Output jack	Male XLR (balanced)
Battery	1900 mA / 3.8V Li-ion
Battery life	Up to 10 hours
Charging time	2 – 2.5 hours
Charging voltage	USB 5V
Charger current	800 mA
Input impedance	47 kΩ
Output impedance	470 Ω
Gain boost	0 – 40 dB
Current consumption	140 mA
Dimensions	45 mm × 114 mm × 41 mm / 1.77" × 4.5" × 1.61"
Weight	275 g / 9.7 oz
Included items	User manual, USB-C charging cable

Nutube

Nutube is a new type of vacuum tube: much smaller, more efficient and longer-lasting than traditional vacuum tubes, but still rich in classic tube tone.

Nutube and the Nutube logo are either registered trademarks or trademarks of KORG INC. in Japan and/or other countries.

– 04 –

FCC REGULATION WARNING

This equipment has been tested and found to comply with the limits for a Class B digital device, pursuant to part 15 of the FCC Rules. These limits are designed to provide reasonable protection against harmful interference in a residential installation. This equipment generates, uses and can radiate radio frequency energy and, if not installed and used in accordance with the instructions, may cause harmful interference to radio communications. However, there is no guarantee that interference will not occur in a particular installation. If this equipment does cause harmful interference to radio or television reception, which can be determined by turning the equipment off and on, the user is encouraged to try to correct the interference by one or more of the following measures:

- Reorient or relocate the receiving antenna.
- Increase the separation between the equipment and the receiver.
- Connect the equipment to an outlet on a circuit different from that to which the receiver is connected.
- Consult the dealer or an experienced radio/TV technician for help.

INFORMATION ABOUT COLLECTION AND DISPOSAL OF OLD ITEMS AND USED BATTERIES



These symbols on the products, packaging, or on any documents in the package mean it is incorrect to mix the used electrical and electronic products and batteries with general household garbage.



To protect our environment, please take old products and used batteries to proper collection places, and follow your national legislation and the Directives 2012/19/EU and 2006/66/EC.



To deal with these old products and batteries properly, please help to save valuable resources and prevent any possibility of side effects on human health and our environment due to the inappropriate disposal of the old products and used batteries.



[For business users in the European Union]
If you want to discard electrical and electronic item, please contact your dealer or supplier for further information.